

# F3 Group

**Redeployable Infrastructure Solutions**

*Rental, lease, sales & custom manufacturing*

Our Partners **We are nine companies, but one group**



**Portable Floors**

Fabric Structures



**Droneport  
Solutions**



**PORTABLE EVENT  
INFRASTRUCTURE**



welcome to  
**Aviation Runways**

# Turnkey Mobile Camps

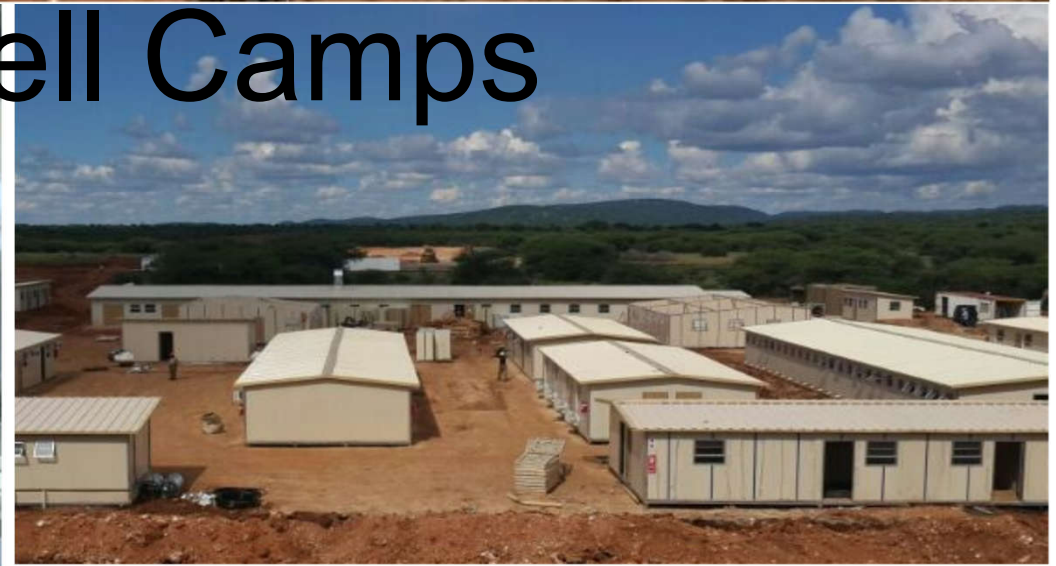
Soft shell /hard-shell sides with soft shell roofs







# Hard-shell Camps





# Turnkey Mobile Camps – soft shell





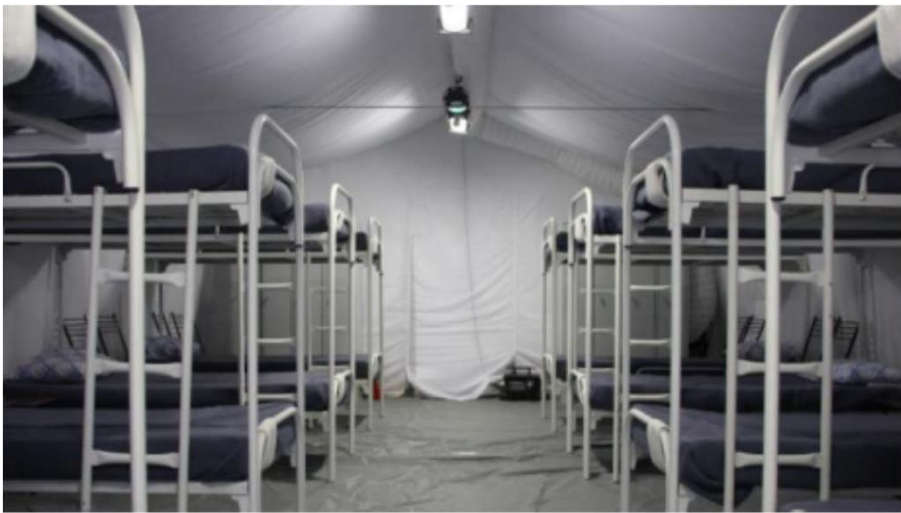
















### Temporary Structure Systems:

- Pagoda Structures 3.00m – 20.00m Width
- Party Tents 3.00m – 10.00m Width
- Large Tents 10.00m – 60.00m Width
- Multi-Level Structures 10.00m – 40.00m Width
- Industrial Structures 5.00m – 30.00m Width
- Rapid Deployment Shelters 4.75m -16.00m Width
- Sports Structures 10.00m – 40.00m Width
- Compatible Structures 2.00m – 50.00m Width
- Custom Structures - Variable Sizes



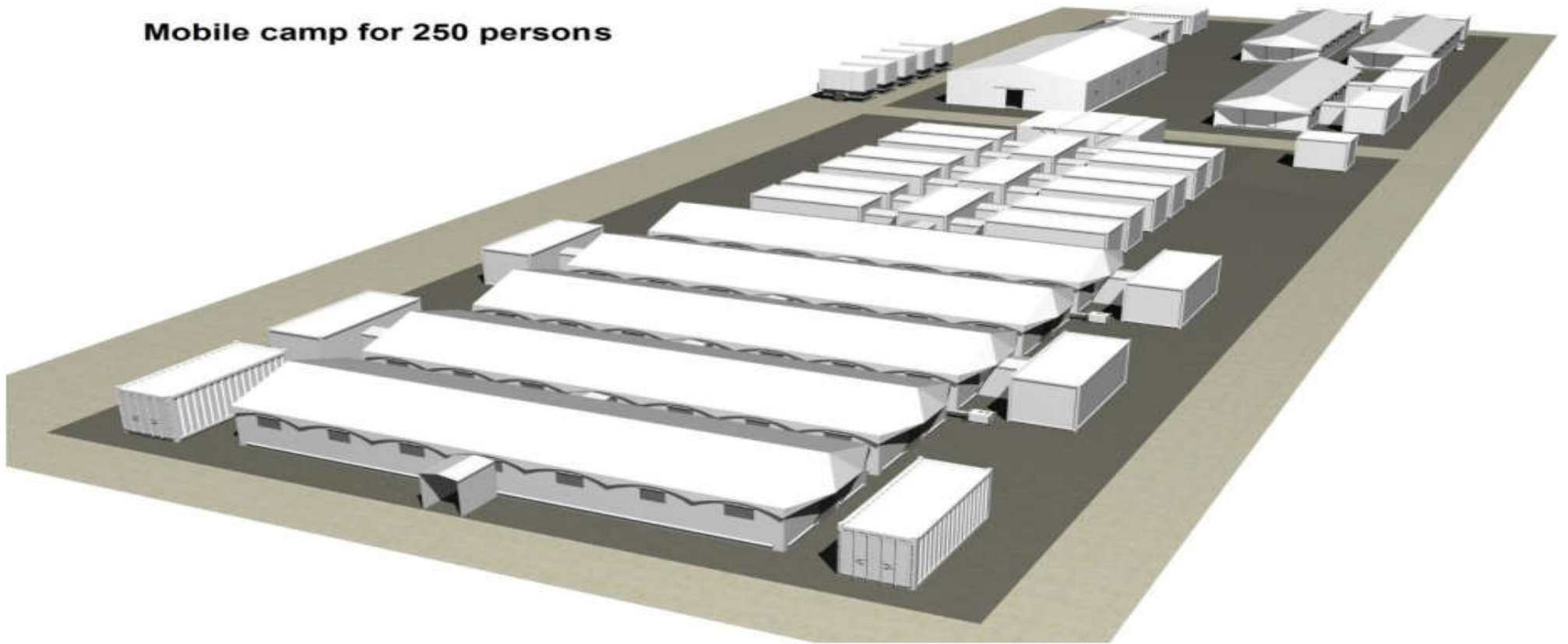






**RAPID SOLUTIONS FOR YOUR  
WORKFORCE'S REMOTE  
ACCOMMODATION NEEDS.**

**Mobile camp for 250 persons**





# Portable Floors



## COMPLETE **Turnkey** mobile camps

- Rapid deployment / set-up / dismantle / preparation and rehabilitation of environment
- 24 hrs onsite service and support
- Maintenance contracts

**Turnkey** specialises in the delivery of turnkey mobile camps in Africa. What does this mean? You tell us where you need to be, how long you want to be there, how many people you want to cater for and your requirements for camp operations and we take care of the rest. You will not have to figure out how to dispose of sewerage, distribute power, water filtration, catering for your camp, sleeping arrangements, satellite communication, temporary foundations, temporary roads, low environmental impact working platforms, storage, laundry and more. Turnkey controls the entire process.

**Turnkey** can provide a rapid solution for your workforces remote accommodation needs. Turnkey can mobilise a self-contained city from 100 – 10,000 people in any remote location in Africa which includes:

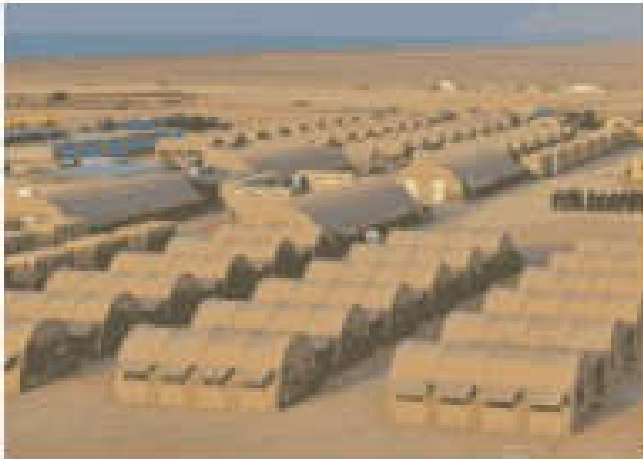
## COMPLETE TURNKEY MOBILE CAMPS

- ✓ **Rapid Deployment / Set-Up / Dismantle / Preparation and Rehabilitation of Environment**
- ✓ **24 Hour Onsite Service and Support**
- ✓ **Maintenance Contracts**





# REDEPLOYABLE CAMP SYSTEMS



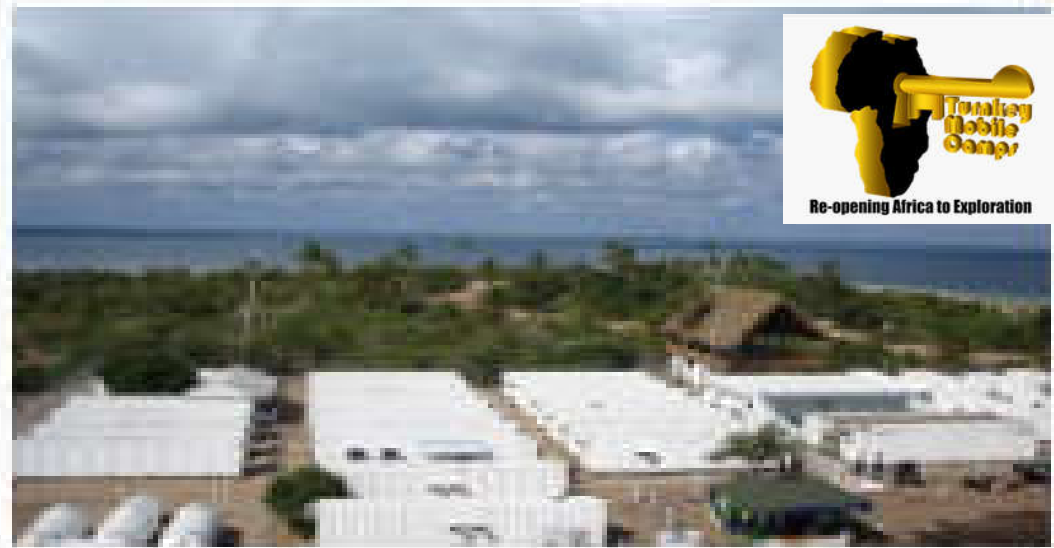




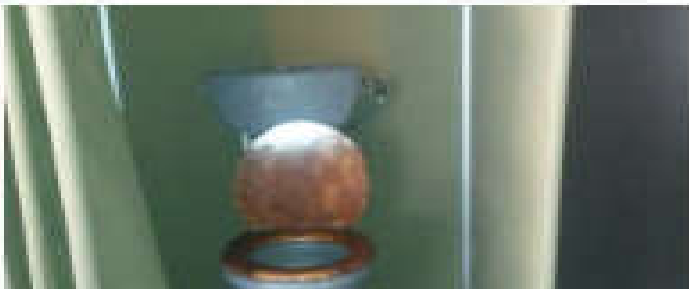
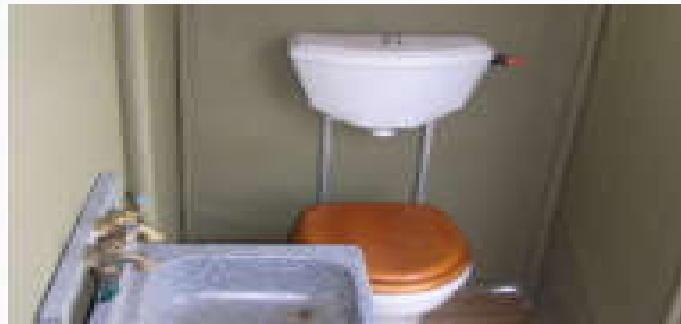






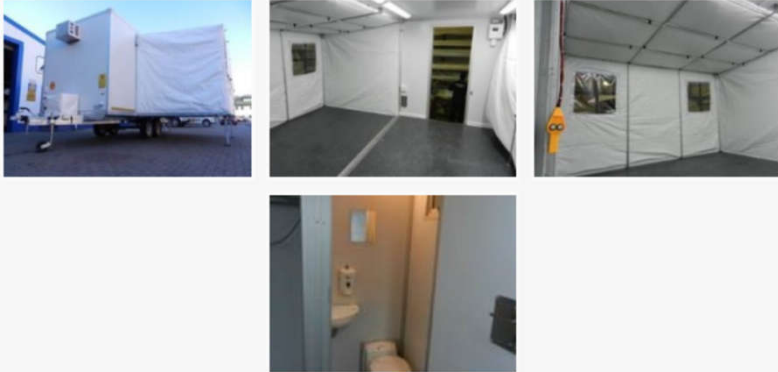


# ABLUTIONS SET-UP





## 6. FLEXI TRAILER OPEN PLAN OFFICE



Versatile fold open trailer to travel over most medium off-road terrain  
Folds open to 3 times trailer size with internal floor area of 27m<sup>2</sup>, including small kitchenette and cassette toilet

## 2. JUNIOR MANAGER 2 SLEEPER 4M(OR 5.5M OVERALL) X 2.5M DOUBLE AXLE CARAVAN



## 5. 6M LAUNDRY CARAVAN



Fully fitted laundry with 3 x 7kg washers and 3 x 7kg dryers, double bowl sink and lots of work surfaces



welcome to  
**Aviation Runways**

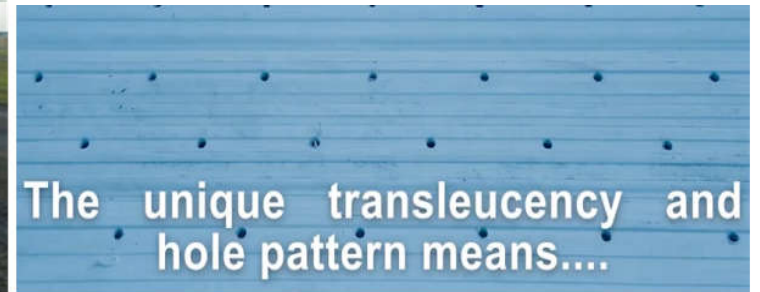
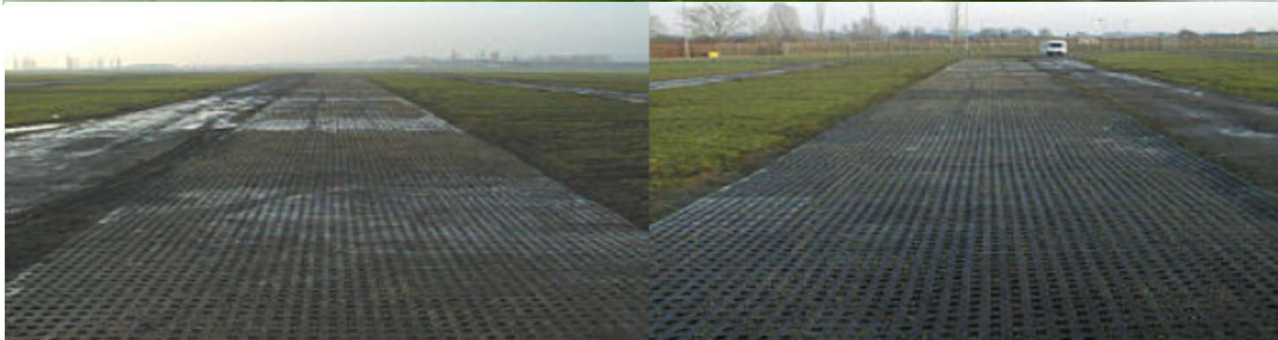


# Aircraft Landing Mats (ALM)

The Pro Aero mats has built-in channels to prevent aviation fuel spillages on the surface, in addition there is ducting where lighting can be installed for night rated pilots without any interferences.



Pro Aero Mat can facilitate drones



Translucency colour and hole pattern Pro Aero Mat allows for a cooler runway surface.

## **Pro Aero mats – suitable for various applications**

Helicopters, UAV, Cargo aircraft landing strips

### **Pro Aero Mat installation guidelines:**

The Pro Aero Mats can be installed over existing runways, to prevent browning out a geo membrane is used to minimise dust. The Pro Aero Mat also allows for better traction and prevent aqua planing in high rainfall areas. Over and above the above, the mats can be utilised for private airfields. The Pro Aero Mats comes in a variety of colours. Territory dependant.

The ground preparation will depend whether the services required are permanent or temporary.

### **Geo-textiles and Pro Aero Mats**

While not necessary, Geo-textiles are an inexpensive way to speed installation and removal time, as the presence of a geo-textile provides a clean and uniform installation surface and prevents debris or mud from interfering with the Pro Aero Mats connection system. Geo-textiles can be used to provide a barrier between dirt, mud and the mats above, and inevitably minimizes the cleaning required upon removal of the Aero Mats



welcome to  
**Aviation Runways**



The Pro Aero mat, comes with a rapid deployable system where the panels can be rolled out for rapid installation in temporary applications.



**The world's strongest rig mats**



**825 PSI, 580 Tons/m<sup>2</sup>**

Power companies around the world use similar systems to work on their utility lines in sensitive wetland areas.

Composite Base Rig Mats™ have been used to transport massive 450-ton cranes and transmission poles weighing in excess of 150 Tons across standing difficult terrain and standing water.

Leading universities, and stadiums have used our Base Rig Mats to protect their fields while installing stages for ceremonies, concerts, and other large events. They have even been used for major events such as the Soccer World Cups and more.

## Pro Road Portable Roadway Mats – Composite Mat Trackway Access

A patented composite mat that has a unique zip-lock interlocking connection system and allows a heavy duty working platform for temporary job sites and also access roads.

Composite Base Rig Mats offers **the best portable roadway mats** options in composite matting. These **temporary roadway solutions** provide ground protection for any project, in any industry. Unlike hardwood mats, composite mats are reusable job after jobs and significantly lighter in weight, with flat pack options, reducing freight costs.

Looking for other composite matting products? We offer an environmental Faun trackway solution for sale. Browse through our website for more details on this solution and others available.





## Do you need a solid working surface?

If you answered “yes” to any of the above questions – then our prefabricated Composite Base Rig Mats™ are the perfect solution for your site. The mats are easy to assemble using an interlocking system. Creating a solid, incredibly durable temporary foundation or road for your equipment and staff. Allowing you to continue work no matter what the ground conditions are like! Suitable for use is:

- Sand
- Mud
- Wetlands & Marshes
- Tidal conditions with water currents
- Coastal areas
- Environmentally sensitive areas

## Are the ground conditions tough?



Composite Base Rig Mats are designed for load bearing vehicles and improved traction. Composite mats facilitate heavy construction vehicles all weights & types.





**Droneport  
Solutions**

# Droneport Solutions

## What we do:

Droneport Solutions specialises in the delivery of turnkey droneports globally. What does this mean? You tell us where you need to be, how long you want to be there, how many people you want to cater for and your requirements for droneport operations and we take care of the rest. You will not have to figure out how to dispose of sewerage, distribute power, water filtration, catering for your droneport, sleeping arrangements, satellite communication, temporary foundations, temporary roads, low environmental impact working platforms, storage, laundry and more. Droneport Solutions controls the entire process.





**Let Droneport Solutions help your commercial drone operation achieve flight now.**

